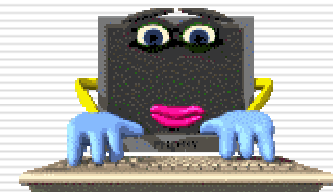


Syracuse EMBS Health Tech, 2007

The 2007 Technologies in Healthcare Seminar

The Lodge, Skaneateles, New York, 04 October 2007

We're Glad You're Here!



The Lodge, Skaneateles, New York, 04 October 2007

Agenda

- Disruptive Innovations in Healthcare by Dr. Robert Corona (MD)
- Innovations in Bioprocess Engineering in CNY by Dr. John Fieschko (Ph.D.)
- Syracuse EMBS Chapter Overview by Albert Di Rienzo
- Networking

Syracuse EMBS Chapter Overview

Albert Di Rienzo
Syracuse EMBS Chapter Chair
Welch Allyn Chief Science & Technology Officer

Agenda

- Mission & Vision
- Introduction
 - IEEE structure
 - EMBS
 - IEEE as an Interface to the Professional Stage
 - Chapter Activities
- Getting Acquainted
- What's Next?

Mission & Vision

□ Academic

- Promote biomedical education
- Advance the application of engineering sciences and technology to medicine and biology
- Advance collaborations, bringing Biologists, Engineers, Mathematicians, Physicians, Physicists, and others together
- Promote cutting-edge biomedical issues via events organization, such as: distinguished lecturers, round tables, conferences, student contests, summer schools, etc.

Mission & Vision

Professional

- Be part of an active professional organization - employers often advertise positions through societies such as EMBS
- Promote biomedical engineering in the Syracuse Section geography
- Keep members informed about job opportunities in biomedical engineering within the Syracuse Section geography

Establish strong bonds between researchers and professionals of engineering, science and medicine.

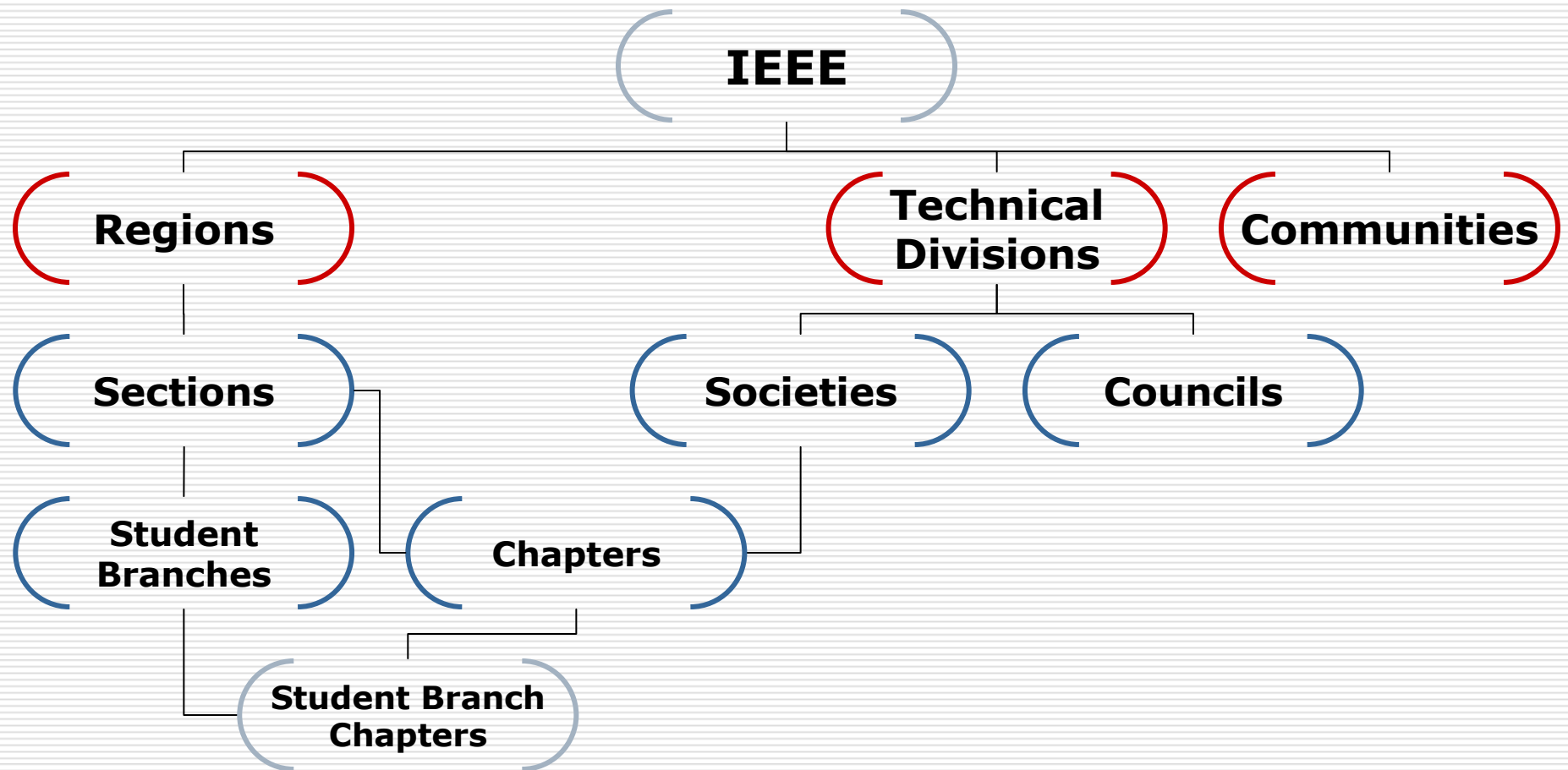
EMBS

- Advances the application of all engineering sciences and technology to medicine and biology, promotes the profession, and provides global leadership for the benefit of its members and humanity by disseminating knowledge, setting standards, fostering professional development, and recognizing excellence

EMBS

- ❑ Over 8,000 Society members worldwide, out of 370,000 IEEE members
- ❑ Over 100 EMBS Chapters - 2nd in rank behind Computer Society, which has 180 chapters worldwide
- ❑ EMBS is a growing society, with 54 new Chapters in the approval process. Regions 6, 8 and 10 are the fastest growing

IEEE Structure



Syracuse EMBS Chapter

Region 1

Syracuse Section

<http://ieee.org/go/syracuse>

Syracuse EMBS Chapter

Other Syracuse IEEE Chapters

Roles of Region 1

□ Region 1:

- Covers Northeastern United States:
 - www.ieee.org/web/geo_activities/home/world_reg.html
- Provides coordination between Sections in Region 1
- Controls bylaws of IEEE Specific to Region 1
- Provides awards to outstanding Sections or Chapters

Roles of Syracuse Section

□ Syracuse Section:

- Controls bylaws of IEEE Specific to the Syracuse Section
- Provides funding to the Chapter
- Guides Chapter with Chapter launch and growth
- Serves as networking platform for all Syracuse IEEE Chapters

Syracuse Chapter EMBS Members

- 17 EMBS Professionals
 - 13 Members
 - 1 Senior Member
 - 1 Life Member
 - 2 Life Senior Members
- 2 EMBS Students

Benefits Brought by the Chapter to the EMBS Members

- Opportunities to stay current on latest advancement in biomedical engineering
- Center for help during times of transition: need a job, need to define a new career, need to find expert
- A venue to seek participation in biomedical industry standards
- A center to promote recognition for own professional accomplishment through IEEE Fellowship and Senior Membership programs
- Opportunity to network with an international biomedical engineering organization (meet people, be a speaker, etc.)

IEEE as an Interface to the Professional Stage

- Worldwide career opportunities:
 - <http://careers.ieee.org>
- U.S. career opportunities:
 - www.ieeeusa.org/careers
- Services for job seekers:
 - Post professional resume - job preferences, seek jobs, view available positions
- Services for employers:
 - Post / advertise open positions, search resumes to find the proper employee
- Career Accelerator Forums:
 - <http://spectrum.ieee.org/caf>

EMBS as an Interface to the Professional Stage of Biomedical Engineering

- Services for EMBS members seeking a job and employers offering positions:
 - www.embs.org
- Chapters promote information about careers and job opportunities
- Chapters Promote the role that engineering plays in bettering the Health Industry (*Behind each piece of hospital equipment was a "cool" engineer, scientist, or doctor that wanted to ease pain, save lives, reduce medical errors, prolong the quality of life, etc.*)
- Chapters provide forums for networking and meeting professionals with similar interest
- Chapters mentor high school or college students with understanding biomedical engineering

EMBS in Syracuse

- ❑ Biomedical Engineering as a profession in the Syracuse Section
- ❑ Places biomedical research and development in Syracuse on an international platform. EMBS is in over 50 countries
- ❑ Provides international antennas in field of similar interest
- ❑ Provides opportunity for Syracuse researchers to be invited to talk at other EMBS Chapters worldwide
- ❑ Provides an opportunity to participate in medical engineering standards definition through the IEEE-EMBS standard committee
- ❑ Helps EMBS membership get promoted to higher levels of recognitions (Senior Member and Fellow)

Chapter Activities

- Conferences
- Technical meetings
- Distinguished lecturer programs
- Round tables
- Summer schools
- Student competitions
- Student mentor programs
- Periodical, announcements board
- Syracuse EMBS Chapter Web site
 - <http://www.ewh.ieee.org/r1/syracuse/EMBSWeb/SyracuseEMBS.htm>

IEEE EMBS Syracuse Chapter Founding Officers

- Chair: Albert J. Di Rienzo
- Vice Chair: Andrzej Krol
- Treasurer: Robert Smith
- Secretary: Desiree Dugan-Davis
- Marketing Officer: John Ivanov
- Electronic Communications Officer: Ralph Flatau
- Student Development Officer: Dan Sommers
- Industry Liaison Officer: Bruce Keller

IEEE EMBS Syracuse Chapter Open Founding Officer Positions

□ Open Positions:

- Program Officer – Finds speakers, books speakers, and keep dialog with speakers until the event. Often introduces the speaker to the audience
- Membership Development Officer – Solicits people who are not IEEE members, and invites them to become members as well as members of the EMBS
- Professional Development Officer – Develops support systems to help professionals in career transition
- Award Officer - Selects awards to be given to speakers and Society contributors, or other thank you gifts
- Member at Large Officer – Stays in touch with the Society members in order to get feedback on the Chapter's activities as well as reports some of the members' wishes and recommendations

Upcoming Events

- Stay tuned

Networking!

The Syracuse EMBS Officers Would Like to Say:

“Thanks for Your Participation!”